



Emma Road, London, E13

BUTLER  STAG



Guide Price - £450,000 to £500,000

Nestled on the quiet and sought-after Emma Road in the heart of Plaistow, this delightful 2-bedroom bungalow combines comfortable living with fantastic outdoor space — a rare find in this part of East London.



Freehold

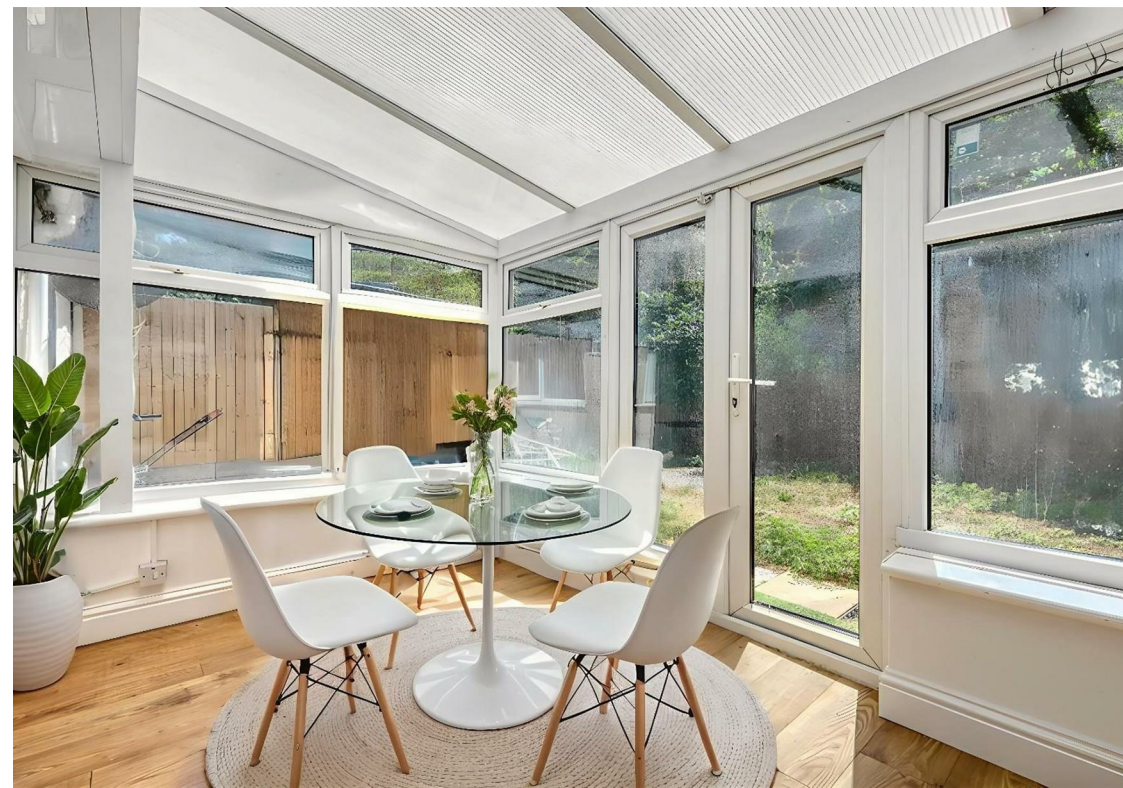
- Semi Detached Bungalow
- Easy Access To Plaistow And Upton Park Stations (District and Hammersmith & City Lines)
- Two Bedrooms
- Close Proximity To Local Amenities, Parks, Schools, and Transport Links

Boasting a bright and airy layout, the property features two generously sized bedrooms, a well-appointed bathroom, and a spacious living room ideal for entertaining. The separate modern fitted kitchen provides ample storage and workspace, leading out to the conservatory and private rear garden — perfect for outdoor dining, gardening, or simply unwinding.

Set on a single level, this bungalow is ideal for a range of buyers including downsizers, small families, or those seeking step-free living. There is also scope to extend (subject to planning), making it a great opportunity for anyone looking to personalise their new home.

This rarely available bungalow offers both comfort and convenience in one of East London's emerging hotspots.

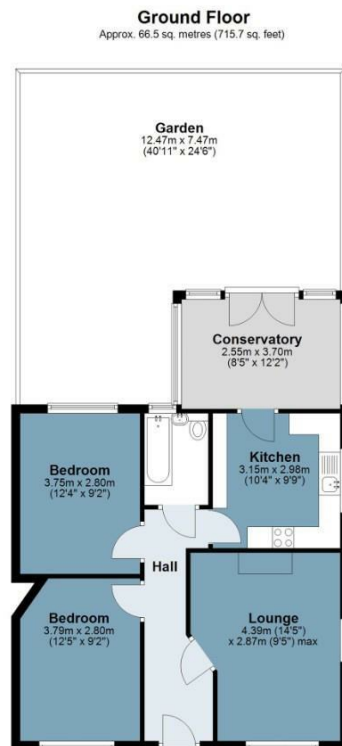




Emma Road

Approx. Gross Internal Area 66.5 Sq M (715.7 Sq Ft)

BUTLER & STAG



Measurements are approximate and for illustration purposes only. While we do not doubt the accuracy and completeness, we advise you conduct a careful independent assessment of the property to determine monetary value.
© @modephotouk www.modephoto.co.uk

IMPORTANT NOTICE - These particulars have been prepared in good faith and they are not intended to constitute part of an offer or contract. We have not performed a structural survey on this property and the services, appliances and specific fittings have not been tested. All photographs, measurements, floor plans and distances referred to are given as a guide and should not be relied upon.

BUTLER & STAG

☎ 020 8102 1236

🏠 508 Roman Road, Bow, London, E3 5LU

✉ bow@butlerandstag.com

www.butlerandstag.uk